

European Mobility Venture

euMOVE 2025



Organized by

Innovation Research

Prof. Sebastian Pfothenhauer



Manuel Jung

Urban Structure and Transport Planning

Prof. Gebhard Wulforst



Carolin Zimmer



Yihan Xu

Automotive Technology

Prof. Markus Lienkamp



Nico Nachtigall

Hans Sauer Stiftung



Sebastian Preiß



euMOVE

European Mobility Venture

- Interdisciplinary, international study project
- Innovative and sustainable mobility

→ Stay abroad in European region

→ Develop a mobility solution

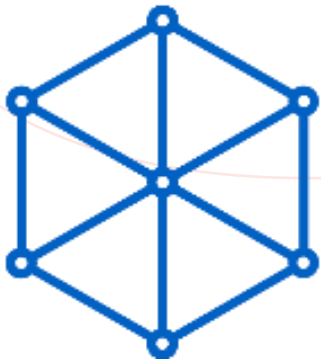
→ Present your concept



Seminar (April – July)
3 ECTS

Design Process

Opportunity Master's Thesis



M Cube

Münchner Cluster für die Zukunft der Mobilität in Metropolregionen

miteinander - möglich - machen

14 Projects - 50 Partners - 50 Mio EUR



SCIENCE



TUM School of Engineering and Design

TUM School of Management

TUM School of Social Sciences and Technology

TUM School of Computation, Information and Technology

Hochschule für Politik an der Technischen Universität München

Universität München acatech

Fraunhofer IAO Mobility Data Space

HM Hochschule München University of Applied Sciences



INDUSTRY



CIVIL SOCIETY



Hans Sauer Stiftung

GREEN CITY

Urban Mobility

ADAC

SCIENCE COMMUNICATION LAB

WOGENO

ADAC Stiftung

GEMEINNÜTZIGER WOHNUNGSVEREIN MÜNCHEN 1899 E.V.



Goal: To establish Munich as a European pioneer and reference region for sustainable and transformative mobility innovations



MCube
Munich Cluster for the Future of
Mobility in Metropolitan Regions



**We are making Munich and the region a
pioneer for sustainable and
transformative mobility innovations.**



KONZEPTIONSPHASENPROJEKT

**CLUSTERS
4 FUTURE**
Innovationsnetzwerke
für unsere Zukunft

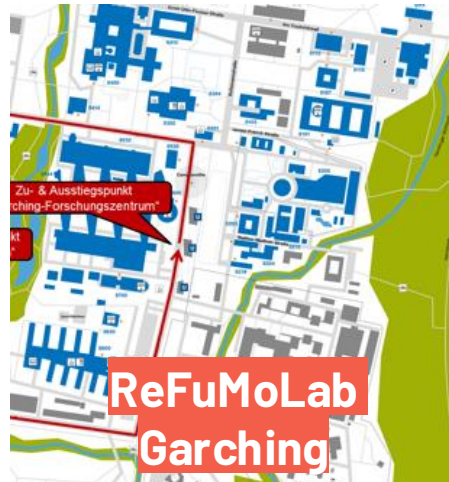
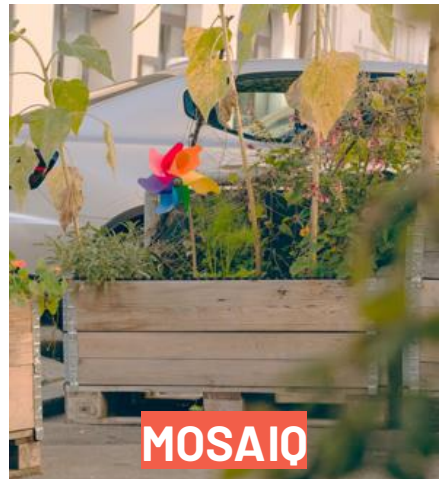
GEFÖRDERT VOM



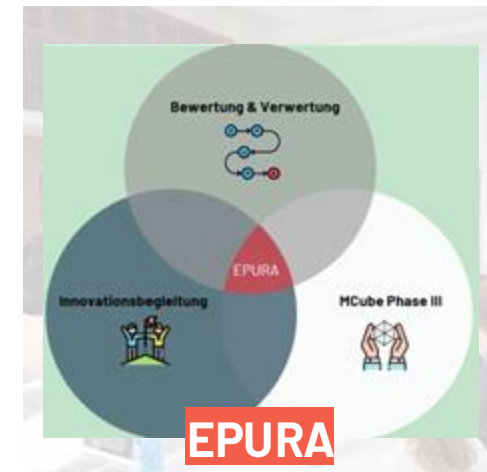
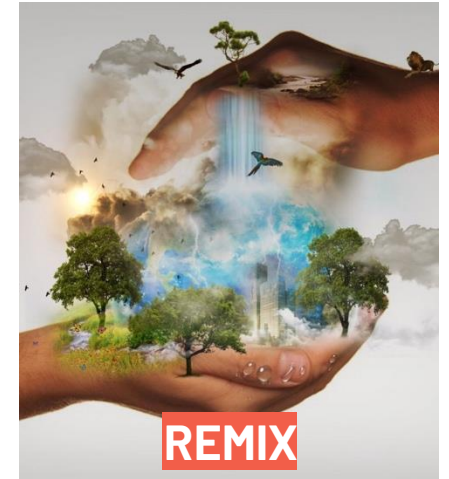
Bundesministerium
für Bildung
und Forschung



Innovation Projects



Integration Projects



Why euMOVE?

- Networking opportunity with MCube partners and international experts
- Experience a guided design process and develop a mobility solution
- Stay abroad
- Practical research opportunity
- Work together with an interdisciplinary and international team
- Present your concept or prototype
- Receive a certificate
- Preparation and inspiration for your thesis



Timeline

- Week 10: Feedback to the applicants
- 30.04.2025: Kickoff Day from 3pm incl. evening event
- Project meetings on Wednesday afternoon (07.05., 14.05., 21.5., 28.5)
- June 2025: Excursion (9 - 14 days)
- Project meetings on Wednesday afternoon (25.6., 02.07., 09.07., 16.7.)
- tbd: Final event in cooperation with MCube



19.02.2025:

Application deadline

25.02.2025:

Application Interviews

Topic of euMOVE 2025

Autonomous Driving

Subtopics could be:

- Infrastructural adaption and consequences for urban planning
- Infrastructure status for autonomous driving
- District classification for different kinds of autonomous driving
- Responsible innovation and experimentation with autonomous driving
- Assessment of sustainability impacts
- Societal consequences and inequalities



Workload

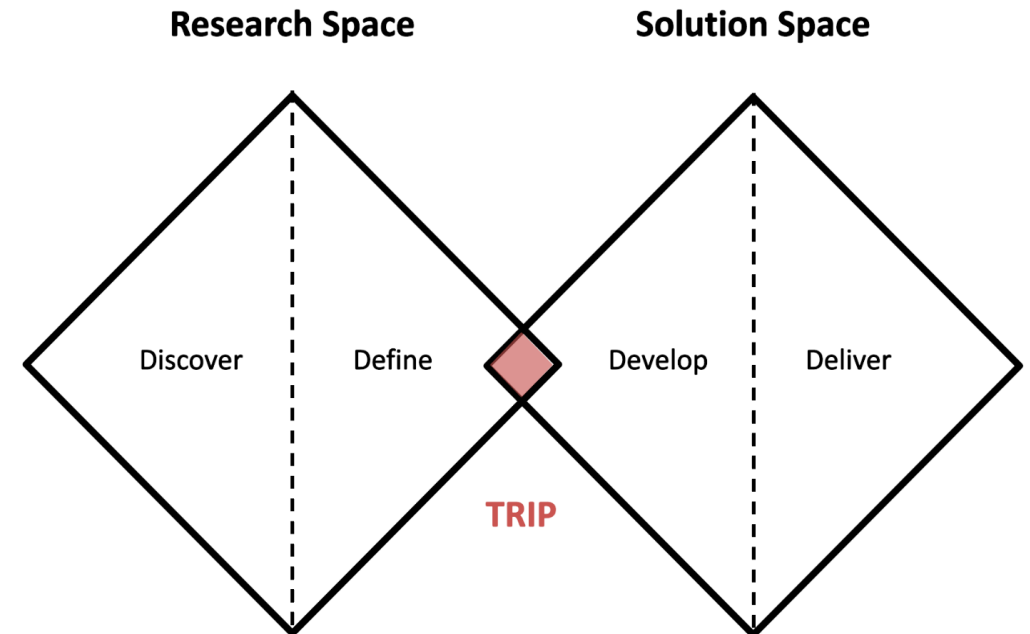
- Social Design Process and development of a concept or prototype
- Organization of stay abroad
- Preparation of the final event
- (Preparing Master's Thesis)



2-3 days per week!

Social Design Process

- Dealing with complex challenges and "wicked problems"
- Integration of different perspectives and various stakeholders
- Phases of divergent and convergent thinking
- Uses prototyping and experimentation to create innovative solutions



Impressions

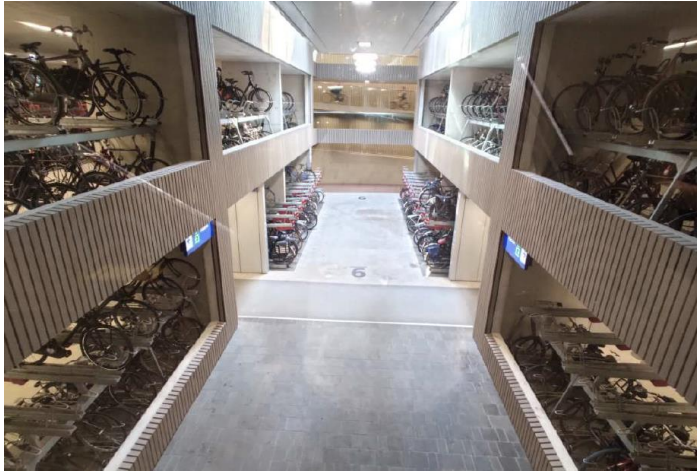


The beginning...

Kick-off (in person)
Partner keynotes
Workshops
Informal get togethers...



...stay abroad...



Talinn
Helsinki
Stockholm
Barcelona
Amsterdam
Malmö
Copenhagen
Oslo
Milano
Bruxelles
Lisbon
Paris
Prague
Lyon
Budapest
Genova
Utrecht
Ljubljana

Final presentation and project events



Application

- CV
- current examination report
- Letter of motivation (max. 1 page)

Your Questions



Send until 19.02.2025 to:
eumove.ftm@ed.tum.de

Mark in your calendar:
25.02. for interviews

