

# A Multiple Modeling Sandbox

Raitenhaslach Symposium  
Greg Macfarlane, Ph.D., PE

**BYU** Civil & Construction Engineering  
IRA A. FULTON COLLEGE OF ENGINEERING



**Beth Osborne**

@BethOsborneTA

(Director of Transportation for America)

Travel demand models are absolute garbage. They have been for decades and yet we allow more good money to be sent after projects designed with bad tools. No more funds for transportation until the program requires accountability and better performance.

# The Broken Algorithm That Poisoned American Transportation

For the last 70 years, American transportation planners have been using the same model to decide what to build. There's just one problem: it's often wrong.



By [Aaron Gordon](#)



Illustrated By [Xavier Lalanne-Tauzia](#)

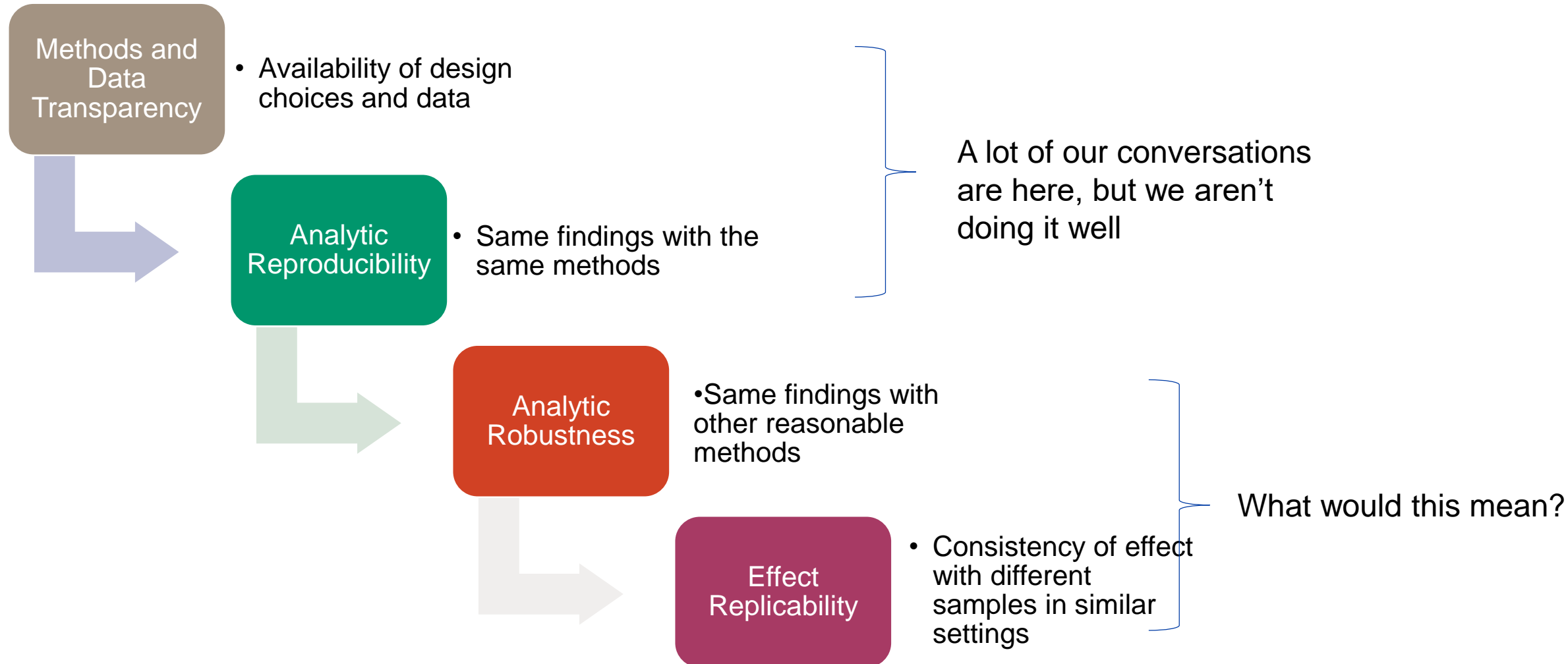
---

August 24, 2020, 6:00am  [Share](#)  [Tweet](#)  [Snap](#)

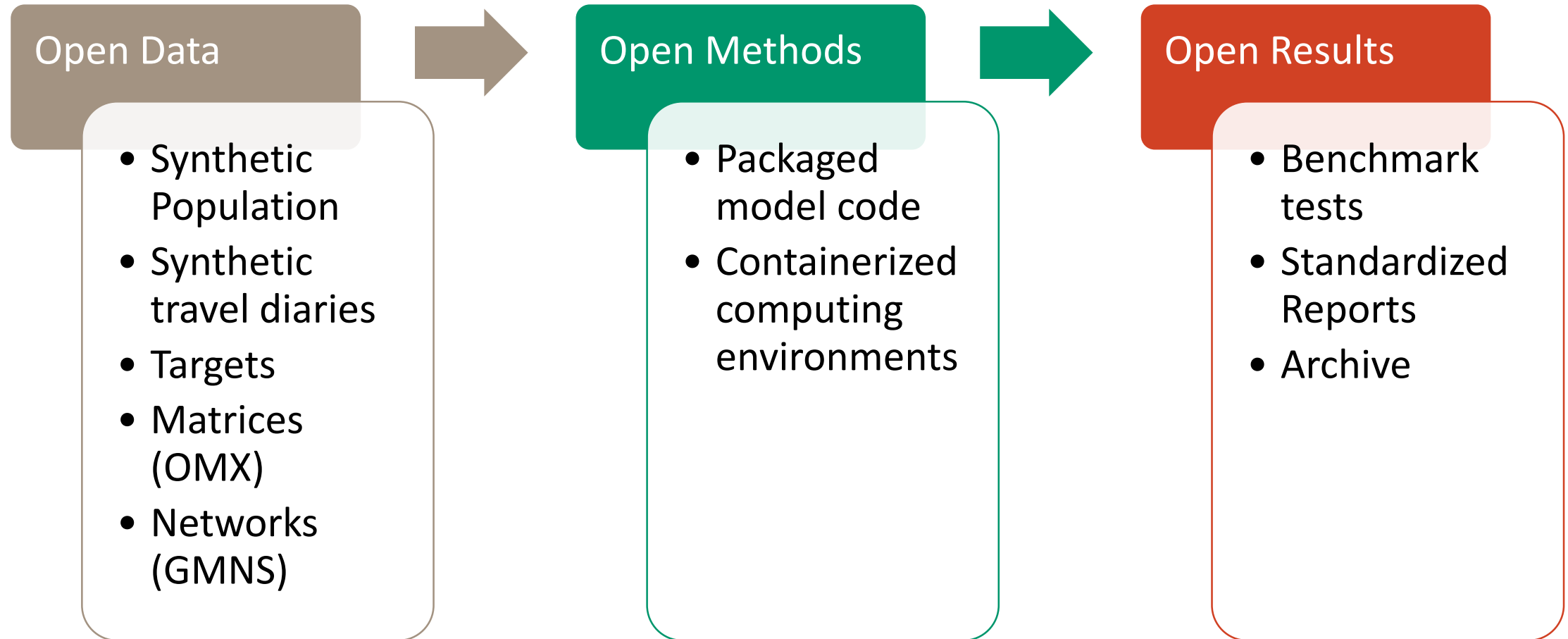
---

*This article appears in VICE Magazine's [Algorithms issue](#), which investigates the rules that govern our society, and what happens when they're broken.*

# Elements of Credibility



# Credibility in Applied Travel Models



# Test Environment Criteria

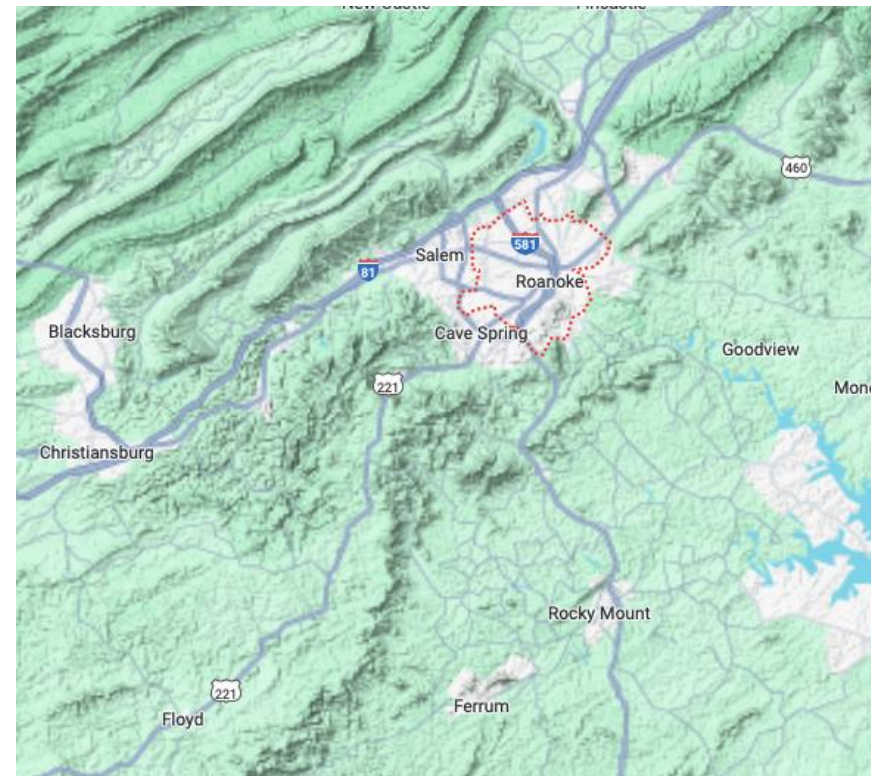
- Should be a real city, not a contrived network
  - Highway counts
  - Transit ridership
- Small
- Isolated from larger metro areas
- Something interesting

# Test Environments

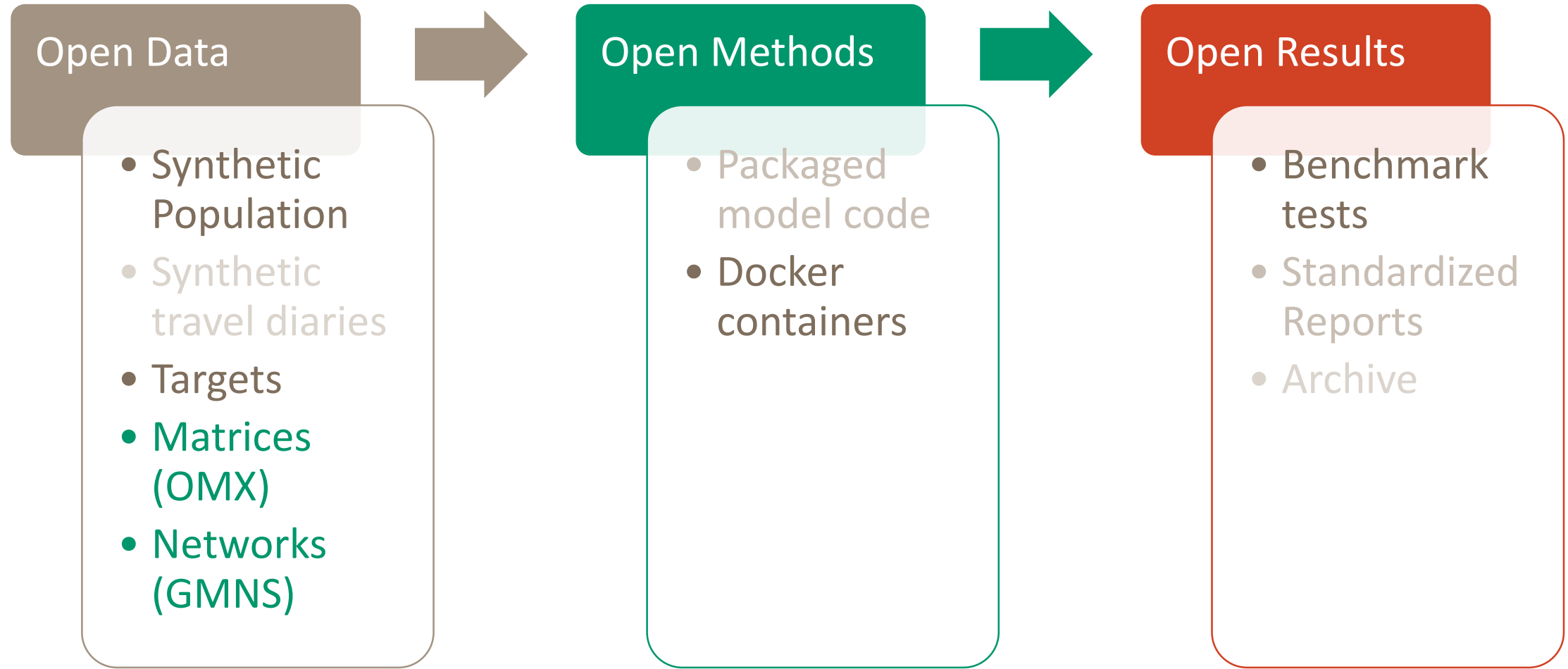
## Logan, Utah



## Roanoke, Virginia



# Credibility in Travel Models





## Survey

Utah HHTS or US  
NHTS  
Or PSRC?  
+ freight and  
external matrices

## Household Model

ActivitySim  
Trip-based  
(trippy?)  
MITO  
Transport Foundry  
Marlin's thing  
More...

## Assignment

MATSim  
Aequilbrae  
(Static)

## Tests

- Add a specified development
- Widen a specific road
- Eliminate a specific road
- Increase transit frequency

## Base Reports

- Error on counts and transit ridership
- Annotated run time

## Test Reports

- Change in VMT
- Change in transit route ridership
- Change in volumes on specific roads